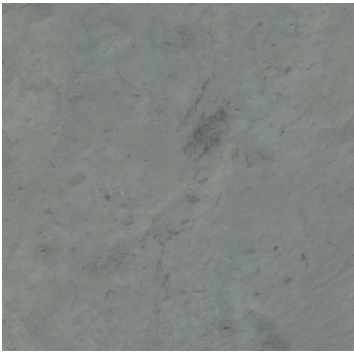


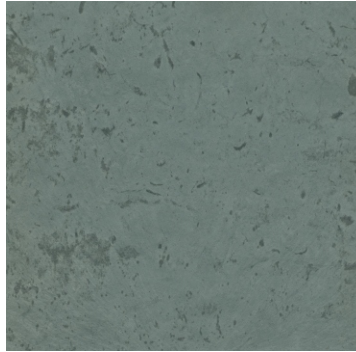
Sheldon Slate

Products Company, Inc.

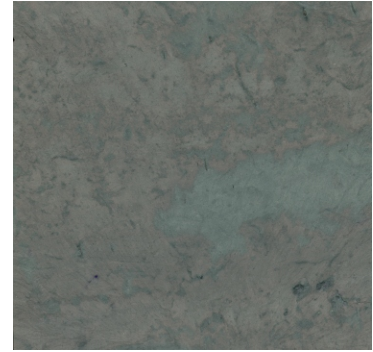
Colors Supplied



Green



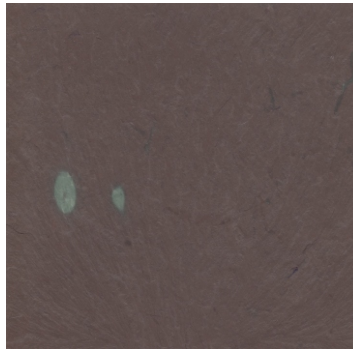
Dark Green



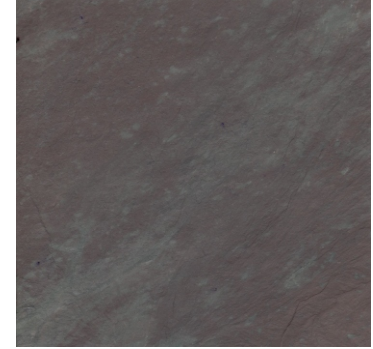
Mottled Purple



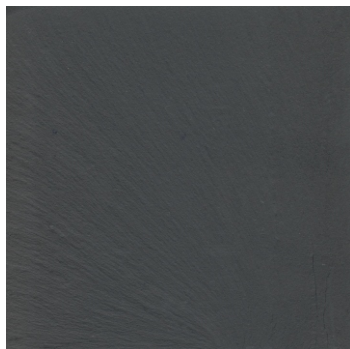
Red



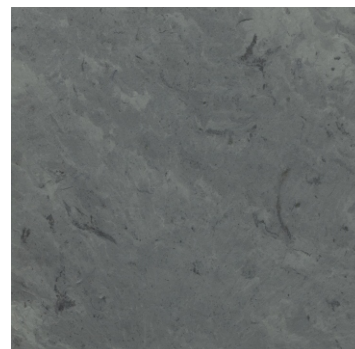
Purple



Variegated Purple



Black



Grey

Non Fading Materials

Our Slate is non-fading and shows no undesirable change in color even after years of weathering.

N.Y. Phone: 518- 642-1280 Fax: 518-642-9085
Maine Phone: 207-997-3615 Fax: 207-997-2966
Visit our web site at: www.sheldonslate.com

Sheldon Slate Products, Inc.
P.O. Box 199
Middle Granville, N.Y. 12849

Sheldon Slate

Products Company, Inc.

Genuine Slate

ASTM standard C119 defines slate as a "microcrystalline metamorphic rock derived from shale and composed of mica's, chlorite and quartz. These minerals have a sub parallel orientation and thus impart strong cleavage to the rock, which allows the latter to be split into thin, but tough sheets.

Genuine Slate is a metamorphic stone with very distinctive properties and performance criteria. Slate counter tops, Slate sinks and Slate flooring are just three examples of how genuine slate may be used.

Regardless of the name given to a type of stone, or the source location of that stone, the material should be tested to determine it's suitability for interior or exterior use and the type of application.

*AMST Designation C 629-89 Slate Dimension Stone**

| Property | Test Requirements | Classifications | ASTM Test Methods |
|--|----------------------------|---------------------------|-------------------|
| Absorption | 0.25 0.45 | 1 Exterior 11 Interior | C121 |
| Modulus of rupture Mpa Across grain | 9000[62.1] 9000[62.1] | 1 Exterior 11 Interior | C120 |
| Along grain | 7200[49.6] 7200[49.6] | 1 Exterior 11 Interior | |
| Abrasion resistance | 8.0 8.0 | 1 Exterior 11 Interior | C 241 |
| Acid resistance | 0.015[0.38] 0.025[0.64] | 1 Exterior 11 Interior | |

Sheldon Slate Products, Inc.
Box 199 Fox Road
Middle Granville, N.Y. 12849

N.Y. Phone: 518- 642-1280 Fax: 518-642-9085
Maine Phone: 207-997-2966
Visit our web site at: www.sheldonslate.com

** Reprinted with permission from the Annual Book of ASTM standard, copyright American Society for Testing and Materials. Slate standards C119, C629, C406 may be purchased from ASTM, 100 Barr Harbor Drive, West Conshohocken, Pa. 19428-2959*

Sheldon Slate

Products Company, Inc.

Sheldon Slate Laboratory Test Results

| Test | Grey Green | Red | Mottled | Variiegated | Black |
|--|---|---|---|---|---|
| <i>Modulus of Rupture</i> ASTM C120 | Grain Orientation Parallel to Length 12,190 psi | Grain Orientation Parallel to Length 11,540 psi | Grain Orientation Parallel to Length 15,160 psi | Grain Orientation Parallel to Length 10,740 psi | Grain Orientation Parallel to Length 9,716 psi |
| | Grain Orientation Perpendicular to Length 9,910 psi | Grain Orientation Perpendicular to Length 8,990 psi | Grain Orientation Perpendicular to Length 9,090 psi | Grain Orientation Perpendicular to Length 10,650 psi | Grain Orientation Perpendicular to Length 8,0169.910 psi |
| <i>Modulus of Elasticity</i> ASTM C120 | Grain Orientation Parallel to Length 14,851,000 psi | Grain Orientation Parallel to Length 14,542,000 psi | Grain Orientation Parallel to Length 14,110,000 psi | Grain Orientation Parallel to Length 11,185,000 psi | Grain Orientation Parallel to Length 12,400,000 psi |
| | Grain Orientation Perpendicular to Length 13,514,000 psi | Grain Orientation Perpendicular to Length 12,869,000 psi | Grain Orientation Perpendicular to Length 13,046,000 psi | Grain Orientation Perpendicular to Length 13,697,000 psi | Grain Orientation Perpendicular to Length N/A |
| <i>Water Absorption</i> ASTM C120 | 0.11% | 0.08% | 0.13% | 0.14% | 0.25% |
| <i>Weather Resistance</i> ASTM C217 | 0.002 in. | 0.002 in. | 0.002 in. | 0.001 in. | 0.008 in. |
| <i>Abrasion Resistance</i> ASTM C241 | H3 = 10.2 | H3 = 18.2 | H3 = 9.0 | H3 = 8.8 | H3 = 8.7 |
| <i>Coefficient of Friction</i> ASTM C1028 | As Received Dry = 0.76 | As Received Dry = 0.86 | As Received Dry = 0.80 | As Received Dry = 0.79 | As Received Dry = N/A |
| | As Received Wet = 0.57 | As Received Wet = 0.66 | As Received Wet = 0.62 | As Received Wet = 0.59 | As Received Wet = N/A |
| | After Cleaning Dry = 0.75 | After Cleaning Dry = 0.85 | After Cleaning Dry = 0.78 | After Cleaning Dry = 0.78 | After Cleaning Dry = 0.79 |
| | After Cleaning Wet = 0.58 | After Cleaning Wet = 0.63 | After Cleaning Wet = 0.63 | After Cleaning Wet = 0.59 | After Cleaning Wet = 0.8 |

Sheldon Slate Products, Inc.
Box 199 Fox Road
Middle Granville, N.Y. 12849

N.Y. Phone: 518- 642-1280 Fax: 518-642-9085
Maine Phone: 207-997-3615 Fax: 207-997-2966
Visit our web site at: www.sheldonslate.com

